



2013-14

REPORT TO THE
COMMUNITY

It's All About
the Kids in
Kern County!





Roland Maier

A Letter from the Executive Director

Dear Community Members:

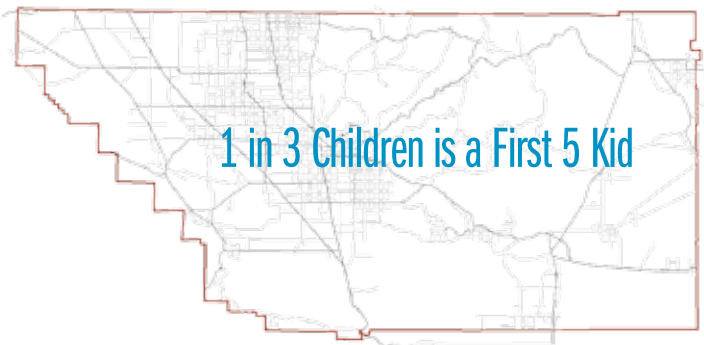
It is with great pride that First 5 Kern presents to you its 2013-14 Report to the Community. This year, First 5 Kern funded 40 programs throughout Kern County to improve all phases of early childhood development for children ages 0 to 5.

First 5 Kern has built a network of service providers dedicated to meeting the needs of Kern County's youngest children and their families with the goal of helping children enter kindergarten healthy and prepared for success. This report provides you with a snapshot of those important services.

Through a Request for Proposals process just completed in February 2015, we are also pleased to report that although First 5 funding is declining at approximately four percent a year, we have committed annual funding to forty-one programs over the next five years.

We applaud the work of our funded partners featured in this report and will continue to invest prudently in children and families, guided by our Strategic Plan and research-based outcomes.

Roland Maier
Executive Director



Our Vision

All Kern County children will be born into and thrive in supportive, safe, loving homes and neighborhoods and will enter school healthy and ready to learn.

Our Mission

To strengthen and support the children of Kern County prenatal to five and their families by empowering our providers through the integration of services with an emphasis on health and wellness, parent education, and early childcare and education.

Our Charge

First 5 Kern was established in 1998 when California voters passed Proposition 10 – The California Children and Families Act – which levied a 50-cent tax on each pack of cigarettes and other tobacco products sold. Revenues generated from the tobacco tax are used to fund local programs that promote early childhood development for children ages 0 to 5 in the areas of health and wellness, early childcare and education, parent education and support services, and integration of services.

Why Ages Zero to Five?

A child's brain develops more in the first five years than at any other time in their life. How children are nurtured and cared for during their first years influences their emotional, physical and intellectual environment and has a profound impact on how the brain is organized. The relationships and contacts a child has with parents and caregivers significantly influence how a child will function in school and later in life.

Our Commitment to Kern County Children

First 5 Kern is designed to provide on a community-by-community basis, a comprehensive, integrated system of early childhood development services for all children ages prenatal to five.

Through community collaboration of services to provide healthcare, dental care, quality childcare, parent education and effective intervention for at-risk families, Kern County families are provided with the tools necessary to foster secure, healthy and loving attachments.

Our focus is on supporting children to be healthy, active learners who grow up in families and communities that nurture them. In 2013-14, we invested \$10,665,764 in services for children and families in Kern County.

For more information on the First 5 Kern and its work, please visit www.First5Kern.org.

IMPACT ON KERN COUNTY

In this report, we look back on 2013-14 and see the tremendous impact that First 5 Kern-funded services are having on families in Kern County.

Community Investment

In 2013-14, First 5 Kern invested more than \$10.7 million for services to Kern County families with children ages 0 to 5:

- \$4.1 million for Health and Wellness Services
- \$3.8 million for Parent Education and Support Services
- \$2.0 million for Early Childcare and Education
- \$0.8 million for Integration of Services

Services

The following are examples of services provided by our funded programs in Kern County:

- 3,442 families were case-managed by Differential Response, Domestic Violence Reduction Project and Guardianship Caregiver Project to address the demand on local child protection.
- 10,393 callers with children ages 0 to 5 were assisted by 2-1-1 Kern County.
- 881 children participated in early education activities at 14 center-based facilities.
- 1,170 children participated in summer bridge programs to enhance school readiness through center-based activities.
- 132 families were case-managed by Black Infant Health to enhance parent education and address smoking cessation, alcohol abuse and substance consumption.
- 987 children were enrolled and 985 children were renewed in health insurance through the Successful Application Stipend program.

Communities Served

Arvin, Bakersfield, Bodfish, Boron, Buttonwillow, California City, Cantil, Delano, Edison, Edwards Air Force Base, Fellows, Frazier Park, Glennville, Inyokern, Johannesburg, Keene, Kernville, Lake Isabella, Lamont, Lebec, Lost Hills, Maricopa, McFarland, McKittrick, Mojave, North Edwards, Onyx, Randsburg, Richgrove, Ridgecrest, Rosamond, Shafter, Taft, Tehachapi, Tupman, Walker Basin, Wasco, Weldon, Wofford Heights and Woody.

Integration of Services

First 5 Kern not only dedicated new resources to strengthening quality of specific services, but also leveraged support to develop service networking across focus areas.



School Readiness

Through First 5 Kern-funded programs, more than 2,000 children participated in school readiness learning activities to help prepare them for kindergarten.



Community Outreach

During outreach events held throughout the year, First 5 Kern connects with numerous parents to provide information on the important stages of early childhood development and local services that are available to them.

Our Focus Area 1 – Health and Wellness

First 5 Kern-funded programs address the healthcare needs of children ages 0 to 5. These programs improve the health of children through a countywide outreach and enrollment program to enroll children and pregnant women in health insurance. First 5 Kern also supports dental screening and treatment programs for children ages 1 to 5, mental health services, infant health, immunizations and care coordination for medically vulnerable children.

Our 2013-14 funded programs and partners:

- Bakersfield Adult School Health Literacy Program – *Kern High School District*
- Black Infant Health – *County of Kern Public Health Services Department*
- Community Health Initiative of Kern County – *Mercy Foundation - Bakersfield*
- Children's Mobile Immunization Program – *San Joaquin Community Hospital*
- Early Intervention Program – *Henrietta Weill Memorial Child Guidance Clinic*
- Kern County Children's Dental Health Network – *West Kern Community College District*
- Make A Splash – *City of Bakersfield Recreation and Parks*
- Medically Vulnerable Infant Program – *Clinica Sierra Vista*
- Medically Vulnerable Care Coordination Project – *County of Kern Public Health Services Department*
- Nurse Family Partnership Program – *County of Kern Public Health Services Department*
- Richardson Special Needs Collaborative – *Kern County Superintendent of Schools*
- Special Start for Exceptional Children – *Caring Corner*
- Successful Application Stipend – *County of Kern Public Health Services Department*

Across 14 programs, the average number of families in need of dental or eye care dropped from 48 at program entry to 7 in the first quarter. Five programs reduced the number to zero at the end of the sixth month.

- 2013-14 Annual Report



Kern County Dental Health Network

In 2013-14, the **Kern County Dental Health Network** provided 4,757 oral health exams, 3,429 dental cleanings, 1,978 fluoride treatments, 1,855 dental indices and 306 fissure sealants for children ages 0 to 5.



Mobile Immunization Program

The **San Joaquin Community Hospital's Children's Mobile Immunization Program** provides immunizations to children ages 0 to 5. The mobile unit travels throughout Kern County to ensure that all families have access to free immunizations in or near their own neighborhood. In 2013-14, 16,259 vaccines were administered to 3,486 children at 178 clinics countywide.

Our Focus Area 2 – Parent Education and Support Services

First 5 Kern-funded programs offer parents and caregivers access to culturally-appropriate training in child development; brain development; parenting skills; the value of playtime; and access to family support services such as a public health nurse, crisis intervention, substance abuse and health education. These programs address needs of a diverse range of clients, including adolescents, teen parents and clients facing domestic violence or guardianship issues.



Lamont Parenting Class

Parents of the **Lamont Vineland School Readiness Program** participate in parenting classes to expand their knowledge of developmental milestones and norms. The program also provides direct family support services through case management, health screenings and referrals. Preschool children are provided early learning activities through center-based and kindergarten transition classes.

Our 2013-14 funded partners:

- 2-1-1 Kern County – *Community Action Partnership of Kern*
- Arvin Family Resource Center – *Arvin Union School District*
- Buttonwillow Community Resource Center – *Buttonwillow Union School District*
- Differential Response – *Kern County Network for Children*
- Domestic Violence Reduction Project – *Greater Bakersfield Legal Assistance, Inc.*
- East Kern Family Resource Center – *Community Action Partnership of Kern*
- Greenfield Family Resource Center – *Greenfield Union School District*
- Guardianship Caregiver Project – *Greater Bakersfield Legal Assistance, Inc.*
- Indian Wells Valley Family Resource Center – *Clinica Sierra Vista*
- Kern River Valley Family Resource Center – *Kernville Union School District*
- Lamont Vineland School Readiness Program – *Lamont School District*
- McFarland Family Resource Center – *McFarland Unified School District*
- Mountain Communities Family Resource Center – *El Tejon Unified School District*
- Shafter Healthy Start – *Richland School District*
- Southeast Neighborhood Partnership Family Resource Center – *Clinica Sierra Vista*
- West Side Community Resource Center – *Taft City School District*
- Women's Shelter Network – *Women's Center - High Desert, Inc.*

Effective parent education programs have been linked with decreased rates of child abuse and neglect; better physical, cognitive and emotional development in children; and increased parental knowledge of child development and parenting skills. Six programs provided education workshops for 1,052 parents and guardians, an 11 percent increase over last year.

- 2013-14 Annual Report

Our Focus Area 3 – Early Childcare and Education

First 5 Kern supports programs with the primary objective to provide childcare with an education component. The programs offer school readiness activities and resources, developmental assessments, nutrition services and parent education.



Summer Bridge

Ready to Start is a summer bridge program that provides a five-week structured, academic program to prepare children for kindergarten who have limited or no preschool experience. Children also receive health and dental screenings.

Enhancement of program quality has been documented by consistent increases of service deliveries and sustainable improvement of assessment outcomes.

- 2013-14 Annual Report

Our 2013-14 funded programs and partners:

- Blanton Child Development Center – *Kern County Superintendent of Schools*
- Delano School Readiness – *Delano Union School District*
- Discovery Depot Child Care Center – *Bakersfield Homeless Center*
- Lost Hills Family Resource Center – *Lost Hills Union School District*
- Neighborhood Place Community Learning Center – *North of the River Recreation and Park District*
- Ready to Start – *Ready to Start Foundation*
- Small Steps Child Development Center – *Alliance Against Family Violence and Sexual Assault*
- South Fork Preschool and Day Care Center – *South Fork Union School District*
- Supporting Parents and Children for School Readiness – *Bakersfield City School District*
- Wind in the Willows Preschool – *Wind in the Willows Education Organization*



Blanton Child Development Center

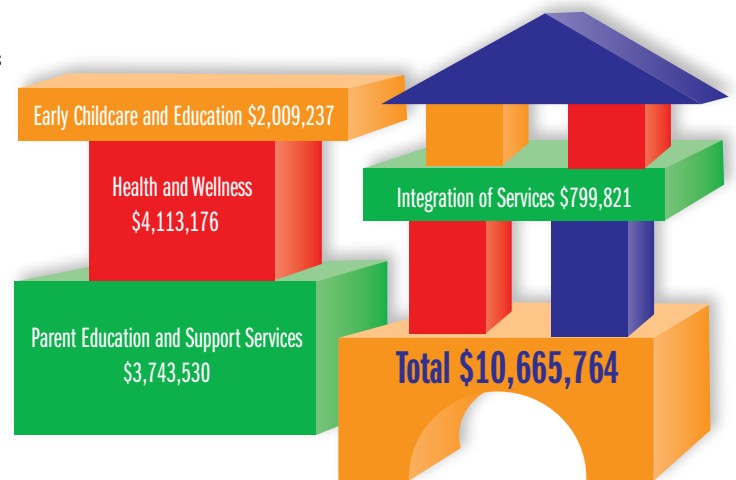
*Parents and children participate in a garden planting at **Blanton Child Development Center** as part of their Youth Engagement activity. They planted lettuce, tomatoes, peppers and onions, which they will use for a hamburger BBQ. The Center provides support to parenting teens through parent education classes and school readiness activities.*

Our Financials – Making Your Tobacco Tax Dollars Count

First 5 Kern is committed to using Kern County’s tobacco tax dollars efficiently to support quality services for children ages 0 to 5. We want our funded partners to be successful and work closely with them in all aspects of their operations.

- √ We closely monitor every contract to ensure programs are achieving results and meeting all of their performance measures.
- √ We provide training and technical assistance to help build the capacity of all our funded partners and to support their success.
- √ We are committed to evaluating the effectiveness of our investments. All our initiatives receive extensive support to develop evaluation plans and to document and report results.

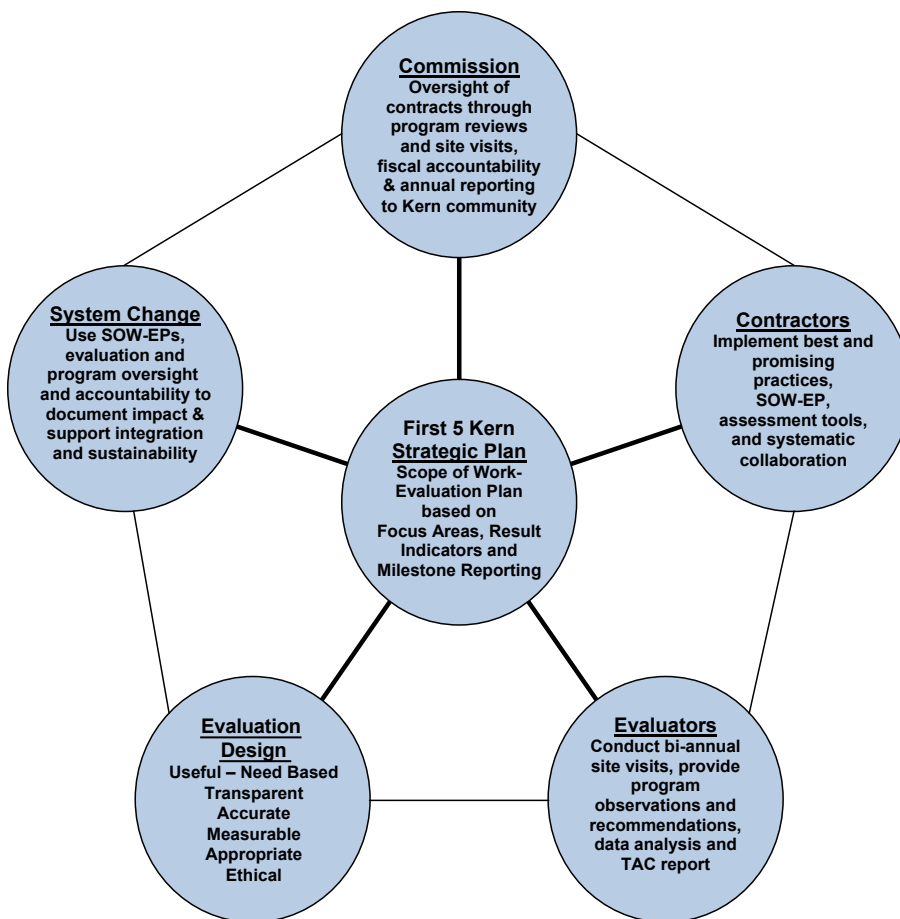
Fiscal Year 2013-14 Expenditures by Focus Area



In 2013-14, First 5 Kern-funded programs leveraged **\$3,789,497** to enhance the services provided for Kern County children and families.

- 2013-14 Annual Report

First 5 Kern Evaluation Framework



A strong evaluation component assures that programs are providing direct services to children and their families according to each program’s Scope of Work-Evaluation Plan and First 5 Kern’s Strategic Plan. We are able to report the success of each program through measurable data.

Commissioners

Larry J. Rhoades, Chairman

Retired Kern County Administrator

Sam Aunai

Dean of Instruction, Porterville College

Emily Duran

Director of Provider Relations, Kern Health Systems

Claudia Jonah, MD

Health Officer, County of Kern Public Health Services Department

Dena Murphy

Director, Kern County Department of Human Services

Rick Robles

Superintendent, Lamont School District

Al Sandrini

Retired School District Superintendent

Zack Scrivner

Kern County Supervisor, Second District

William Walker

Director, Kern County Department of Mental Health

Alternate Commissioners

Deanna Cloud, LCSW

*Children's System of Care Administrator
Kern County Mental Health Department*

Michelle Curioso

*Director of Nursing/MCAH Director
County of Kern Public Health Services Department*

Mike Maggard

Kern County Supervisor, Third District

Antanette Reed

*Assistant Director, Child Protective Services
Kern County Department of Human Services*

Commission Staff

ADMINISTRATION

Roland Maier

Executive Director

Sharon Powell

Administrative Assistant

Jan St Pierre

Communications Officer

FINANCE

Kathy Ives, CPA, MPA, MSA

Chief Finance Officer

Patti Taylor

Senior Finance Officer

Charlene McNama

Administrative Finance Specialist

Crystal Gardner

Finance Specialist

PROGRAM

Paula De La Riva-Barrera

Program Officer

Wilknica Jefferson

Program Officer

Anastasia Lester

Program Officer

EVALUATION

Theresa Ortiz, MA

Senior Research Analyst

Diana Navarro

Research Associate

“Built on an axiom that the whole could be larger than the sum of its parts, First 5 Kern’s leadership has effectively strengthened the partnership building across 40 programs to support children ages 0-5 and their families in Kern County.”

- 2013-14 Report of Findings

2724 L Street

Bakersfield, CA 93301

Phone: (661) 328-8888

Fax: (661) 328-8880

Email: info@kccfc.org

This report to the community provides a thumbnail look at the programs and services funded by First 5 Kern. For in-depth information on how children and families in Kern County benefit from Proposition 10, please visit us at www.First5Kern.org.